

Project Name:	
Catalog Number:	Fixture Type:
Volts / Watts:	Lamps / Board:



# HIMALAYAN HIGH BAY FROSTED - 65W LED

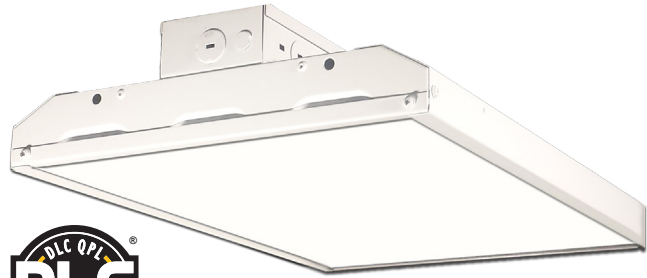
## FEATURES

- 22 Ga Steel
- Post Painted White
- Frosted Lens Standard
- 4000K & 5000K Color Options
- V-Clips Standard
- 0 - 10V Dimmable Driver (100% - 5%)
- 5 Year Warranty
- DesignLights Consortium® Premium Qualified Luminaire

REPLACES: 2T5HO / 3T8

## QUICK SHIP (<24hrs)

- HHB-65WLED-UNIV-50-FRL
  - HHB-65WLED-UNIV-40-FRL
- These Configurations Only



## LED SYSTEMS

Calculated L <sub>70</sub> (TM-21)	>100K
Delivered Lumens	8,515 lm
Total Input Watts	65 W
Luminaire Efficacy Rating (LER)	131 lm/W
Correlated Color Temperature (CCT)	5000K
Color Rendering Index (CRI)	>80
Maximum Ambient Temperature	122°F
Minimum Ambient Temperature	-4°F
Universal Driver	120-277 V

## SUITABLE APPLICATIONS

- Warehouses
- Distribution Centers
- Manufacturing Plants
- Gymnasiums

LED System data above based on HHB-65WLED-UNIV-50-FRL

LED Lumen Maintenance Estimates based on TM-21 projections for the light source at 25°C ambient.



## ORDERING GUIDE:

HHB	65WLED	UNIV	50	e.g. FIOS
-----	--------	------	----	-----------

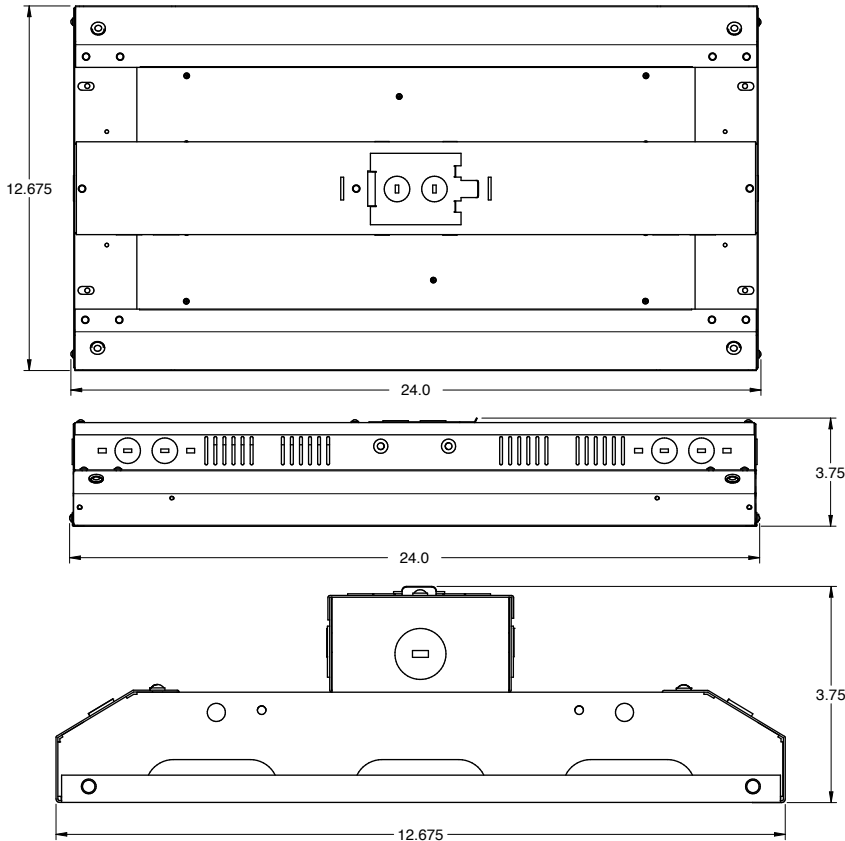
Series	LED	Driver	Color	Options
--------	-----	--------	-------	---------

<input type="checkbox"/> HHB Himalayan High Bay	<input type="checkbox"/> 65WLED	<input type="checkbox"/> UNIV 120-277 Driver	<input type="checkbox"/> 50 <input type="checkbox"/> 40	<input checked="" type="checkbox"/> FRL Frosted Acrylic Lens <input type="checkbox"/> PCL Clear Polycarbonate Lens .125" <input type="checkbox"/> WC 11 Ga Wire Cage <input type="checkbox"/> FIOS On/Off Occupancy Sensor <input type="checkbox"/> FIOS/PC On/Off Occupancy Sensor w/ Photocell <input type="checkbox"/> FIOSPC/DLH Daylight Harvesting w/ Motion & Photocell <input type="checkbox"/> USBD User Select Bi-level Dim w/ Occ. Sensor <input type="checkbox"/> BDxx Preset Bi-level Dim Sensor (xx=% eg. 20,30) <input type="checkbox"/> BDxxPC Preset Bi-level Dim Sensor w/ Photocell <input type="checkbox"/> FI/ILBCP10 10W LED Factory Installed Battery Backup <input type="checkbox"/> FI/ILBCP12 12W LED Factory Installed Battery Backup <input type="checkbox"/> CORDx Cord (x = ft) <input type="checkbox"/> HB-XX-18Y-PAD Toggle Cable System (xx = in) <input type="checkbox"/> SMBKIT Surface Mount Bracket Kit <input type="checkbox"/> CPMB* Center Point Mounting Box <input type="checkbox"/> HOOK* Cast Iron Hook <input type="checkbox"/> HUB 3/4 CONDUIT* Conduit Hub 3/4" <input type="checkbox"/> SD480 480V Step Down Transformer <input type="checkbox"/> SD347 347V Step Down Transformer
---	---------------------------------	--	--	--

\*CPMB must be used with either HOOK or HUB 3/4 CONDUIT and vice versa.

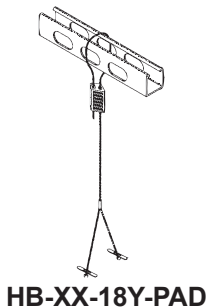
# HIMALAYAN HIGH BAY FROSTED - 65W LED

## HIGH BAY

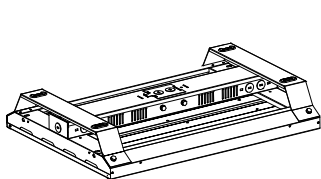


## MOUNTING OPTIONS

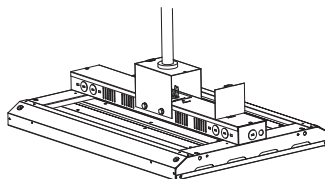
- **HB-XX-18Y-PAD** - Adjustable Y-Paddle Cables (60", 120", or 180")
- **SMBKIT** - Surface Mount Bracket Kit
- **CPMB** - Center Point Mounting Box for Single Point Mounting (Must use with HOOK or HUB 3/4 CONDUIT)
- **HOOK** - Cast Iron Hook for Single Point Mounting (CPMB Required)
- **HUB 3/4 CONDUIT** - Conduit Hub 3/4" for Pendant Mounts (CPMB Required)



**HB-XX-18Y-PAD**



**SMBKIT**



**CPMB**



**HOOK**



**HUB 3/4 CONDUIT**

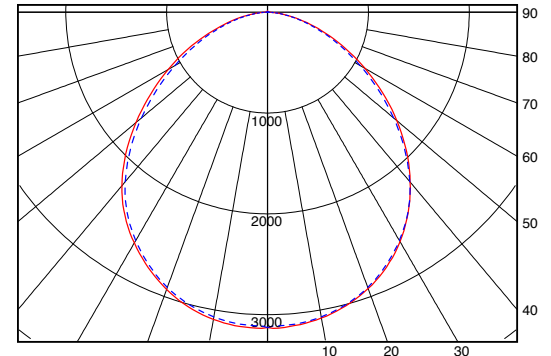
## HBB-65WLED-UNIV-50-FRL

### SUMMARY DATA

HEMISPHERES TESTED:	BOTH
EFFICIENCY (Total):	100.0 %
EFFICIENCY (Downlight):	99.7 %
EFFICIENCY (Uplight):	0.3 %
CIE CLASSIFICATION:	DIRECT
LUMENS/LAMP:	8053.017
NO. OF LAMPS:	1
LUMINOUS OPENING: POINT SOURCE	
Width:	0.00 (Feet)
Length:	0.00
Height:	0.00
INPUT WATTS:	62.9

### PLANE AND CONE DIAGRAM

#### CANDELA PLOT



Totally Asymmetric Solid: 180-0 Degrees Dashed: 270-90 Degrees

Photometric values based upon tests performed in compliance with LM-79. IES files can be downloaded at [www.ilp-inc.com](http://www.ilp-inc.com)

Industrial Lighting Products

## LED lighting facts<sup>®</sup>

A Program of the U.S. DOE

<b>Light Output (Lumens)</b>	<b>8515</b>
<b>Watts</b>	<b>65</b>
<b>Lumens per Watt (Efficacy)</b>	<b>131</b>
<b>Color Accuracy</b>	
Color Rendering Index (CRI)	<b>80</b>
<b>Light Color</b>	
Correlated Color Temperature (CCT)	<b>5000 (Daylight)</b>
Warm White	Bright White
2700K	3000K
4500K	6500K

All results are according to IESNA LM-79-2008: *Approved Method for the Electrical and Photometric Testing of Solid-State Lighting*. The U.S. Department of Energy (DOE) verifies product test data and results.

Visit [www.lightingfacts.com](http://www.lightingfacts.com) for the **Label Reference Guide**.

Registration Number: -077UUL (2/28/2017)  
 Model Number: HBB-65WLED-UNIV-50-FRL  
 Type: Luminaire - Industrial